



# FISKE GENEALOGICAL FOUNDATION

INSIDE THIS ISSUE:

Fall 2023 VOLUME 31 NUMBER 1

<b>Articles</b>	
Welcome to Fall	1
Volunteers Needed	2
Ulster Settlers Database [17th c. Northern Ireland]	2
<b>Education</b>	
Fall Wed. Class Schedule	3
Legacy Group Zoom meetings	4
FamilySearch Special Interest Group meetings	4
<b>Fiske—General Information</b>	
Fiske Board Members	5
Thanks to Donors	4
Newsletter Submissions & Deadlines	4
Library Hours	5
Fees	5
Driving Directions to Fiske	6

## Welcome to Fall

### Virtual Classes Resume Wed., September 13th

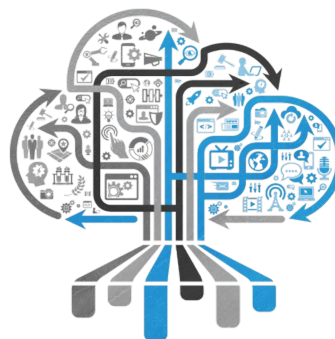
Our Wednesday class series opens September 13th at 10:00 a.m. with “Finding Jane Graham's Parents - Using Clusters and Records in Three Countries” presented by Mary Kircher Roddy. See p. 5 for the full class schedule which is also posted on our website. Information on linking to the class and any class notes are posted to the website by at least the day before. *Do check our website frequently for any changes to the schedule.*

### Other Virtual Classes

**Do you use the Legacy 9 genealogy program?** Join our Legacy Family Tree User Group. Siri Nelson leads the group in exploring the program’s various options and answering any questions. Zoom meetings will resume on Thursday, September 21, 2023 at 1:00 p.m. The monthly meetings are on the third Thursday of the month from 1-2 p.m. Joining details are on p. 6.

**Do you find the FamilySearch.org site confusing?** Join Lou Daly’s FamilySearch Special Interest Group to pick up tips on the best ways to utilize the site. Lou Daly leads a Zoom meeting the first Saturday of every month from October through June, 10:15 a.m. to 12:15 p.m., sponsored by the Seattle Genealogical Society. Details are on p. 6.

*Now that Fiske Library has FamilySearch affiliate status, you can access many resources not available from home.*



## Volunteers Needed

Volunteers are needed to fully re-open the library. At present, we have resumed a limited opening on Wednesdays from Noon to 3 pm, or by appointment Monday, Thursday and Saturday. We would like to resume a regular schedule of open hours for drop-in visitation. A few have expressed interest and we have one person in training, but several volunteers are needed to expand our hours.

All that is required is your interest in genealogy and our library facilities. David Brazier will train volunteers in the basics of welcoming visitors, logging them in, and helping them find the resources they require. If you are willing, there are library tasks that David will be happy to train you for as well. Otherwise, you are welcome to do your own research when not occupied in assisting visitors.

To volunteer, please call David at 206 687-5249 to discuss scheduling and training.

## Newsletter Submissions

Have you discovered a particularly useful resource in your research, or broken through a brick wall? Would you be interested in submitting an article for the newsletter? Articles can be 1-2 pages long and may be subject to gentle editorial comment.

Our newsletter is published in September, December, April and June. Deadlines are the 20th of the month preceding publication. **Writers—articles are always needed and appreciated!** Please send queries or submissions to [editor@fiskelibrary.org](mailto:editor@fiskelibrary.org).

## Ulster Settlers Database

The Ulster Settlers Database is a digital humanities (DH) research project focused on 17th c. Ulster, Northern Ireland.

“Making innovative use of historical data relating to the English and Scottish men and women who settled in Ulster in the period c.1609-1641, the database is a searchable account of a community in flux.” The project currently combines, and will continue to add, a variety of historical sources giving detailed biographical information on the individuals and families who were present in the settlement.

The Ulster Settlers database is available to search here: <https://ulster-settlers.clericus.ie/>



The Fiske Genealogical Foundation is a nonprofit organization that provides genealogical training and resource materials.

The Fiske Genealogical Foundation Newsletter is published four times per year by the Fiske Genealogical Foundation, 1644 43rd Avenue East, Seattle, WA 98112; phone (206) 328-2716. The newsletter is included with membership or a separate mail subscription of \$6.00 per year. It is also available online for no charge.

<https://fiskelibrary.org>

### Newsletter Editor

Marjorie Jodoin  
[editor@fiskelibrary.org](mailto:editor@fiskelibrary.org)

### President

David Brazier



## FALL 2023 EDUCATION

All classes are scheduled from 10:00 A.M. until noon unless otherwise noted. Presentations are currently virtual. Please check the website for linking information ahead of the start time and any class notes. **Check the home page frequently for announced schedule changes.**

2023	Topic	Instructor
<b>Wednesday September 13</b>	Finding Jane Graham's Parents - Using Clusters and Records in Three Countries	Mary Kircher Roddy
<b>Wednesday September 20</b>	Finding Records to Help Document Your Farming Ancestor	Lisa Gorrell
<b>Wednesday September 27</b>	Native American, First Nations, Indian - Native Research	Judy Nimer Muhn
<b>Wednesday October 4</b>	Moving Beyond FamilySearch	Jenny Hansen
<b>Wednesday October 11</b>	Buffalo Soldiers in the West	Janice Lovelace
<b>Wednesday October 18</b>	Answering Columbia's Call: Women's Service During WWI	Lisa A. Oberg
<b>Wednesday October 25</b>	Shaking Loose the Clues: Using Timelines to Organize Your Research	Claire Smith
<b>Wednesday November 1</b>	Using the Online Scandinavian Church Records	Jenny Hansen
<b>Wednesday November 8</b>	What's New in Genetic Genealogy	Karin Borgerson
<b>Wednesday November 15</b>	Using Tables and Timelines to Break Through 'Brick Walls'	Janet Camarata

## Fiske Library Reopened

**Fiske Library has reopened with limited hours on Wednesdays.**

We are pleased to announce that the library is open from noon until 3 p.m. on Wednesdays. As new volunteers are trained additional days will be added. Appointments for other times are still available. To make an appointment please phone the person listed for the day of the week you wish to visit the library:

Saturday: Larry 206 720-4719

Other times: Dave 206 687-5249

## FamilySearch SIG

**Join the FamilySearch Special Interest Group**

Discover the many ways to use the FamilySearch website in your research.

Lou Daly leads a Zoom meeting the **first Saturday of every month October through June 10:15 a.m. to 12:15 p.m.** sponsored by the Seattle Genealogical Society.

A different aspect of the website is featured at every meeting with time for Q & A. Want to join the mailing list? Email Lou: [loudaly@nwlink.com](mailto:loudaly@nwlink.com)



## Legacy Family Tree User Group

Our **Legacy Family Tree User Group** Zoom meetings will resume on **Thursday, September 21, 2023 at 1:00 p.m.** The meetings are on the third Thursday of the month from 1-2 p.m. If you use Legacy Family Tree, please join us.

The types of topics we cover are quite varied –from going over entering unlinked individuals (and how to find them once entered) , to entering adoptive and biological parents, and advanced tagging. We also welcome questions and topic suggestions.

If you are interested in attending, please send a message to [editor@fiskelibrary.org](mailto:editor@fiskelibrary.org) with your email contact information. We will need your email address to send out the Zoom invitation.

Siri Nelson

## Thanks to our Donors

The Fiske Genealogical Foundation and Library has always been dependent upon donations, but this has been doubly true during the pandemic when the library has been closed to regular use. Your ongoing patronage and support is most appreciated. Thank you!

*~ The FGF Board*



## FISKE LIBRARY HOURS

<b>Monday</b>	By appointment. Call David 206 687-5249
<b>Wednesday</b>	The Library is open from Noon to 3 P.M.
<b>Thursday</b>	By appointment. Call David 206 687-5249
<b>Friday</b>	Reserved for research groups from outside the greater Seattle Area. Contact David to make reservations. 206 687-5249
<b>Saturday</b>	By appointment. Call Larry 206 720-4719

## FISKE GENEALOGICAL FOUNDATION INFORMATION

The Fiske Genealogical Foundation is a non-profit service organization providing genealogical training and resource materials. Current Board Members are:

### FISKE GENEALOGICAL FOUNDATION FEES

<b>President</b>	David Brazier
<b>Vice President</b>	Larry Pike
<b>Treasurer</b>	Michelle Lyons
<b>Secretary</b>	Linda Blais
<b>Director</b>	Mary Peters

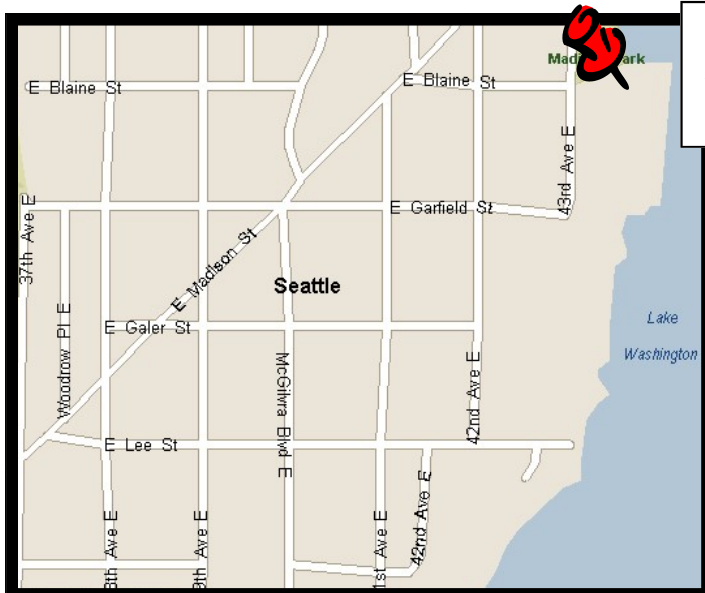
Daily Use Fee \$5.  
 Annual Library Pass \$50.  
 Annual Family Pass \$70.  
 Wednesday Seminar Series  
 (10 sessions) \$35.  
 Annual Library Pass  
 plus Full Year Seminar Series  
 (30 sessions) \$85  
 Newsletter—Mail Subscription  
 \$6 for 4 Issues



Fiske Genealogical Foundation  
1644 43rd Avenue East  
Seattle, WA 98112-3222

Return Service Requested

## HOW TO FIND US!



**Fiske Library is located  
on the lower level of the  
Washington Pioneer Hall.**

- Drive east on E Madison Street to the third crosswalk after reduced speed zone of 25mph. The crosswalk has a yellow blinking light. A one-way street sign is on your right.
- Turn right and follow E Blaine Street to the end of the street.
- The Washington Pioneer Hall faces onto 43rd Ave. E. The Fiske Genealogical Library is located on the lower level of the building.